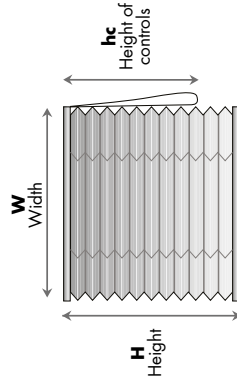


# Pleated & Cellular Blinds

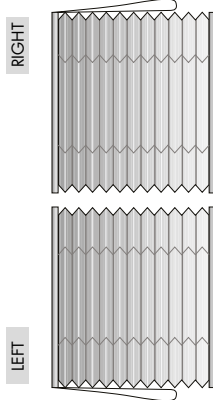
## 1 RECOMMENDATIONS FOR MEASURING



The height of controls will always be calculated from the highest part of the shade (upper part of the support) to the lowest part of the cord/wand weight.

## 2 SIDE OF CONTROLS

Inside installation



Inside view

The side of controls, right or left, will always be calculated from the inside view.

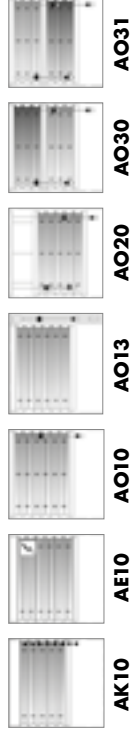
## 3 FABRIC

Please indicate on the order sheet the reference, collection and color found on the label of the selected fabric.

## 4 IMAGINE MODELS (See on the price list pages XX to XX)

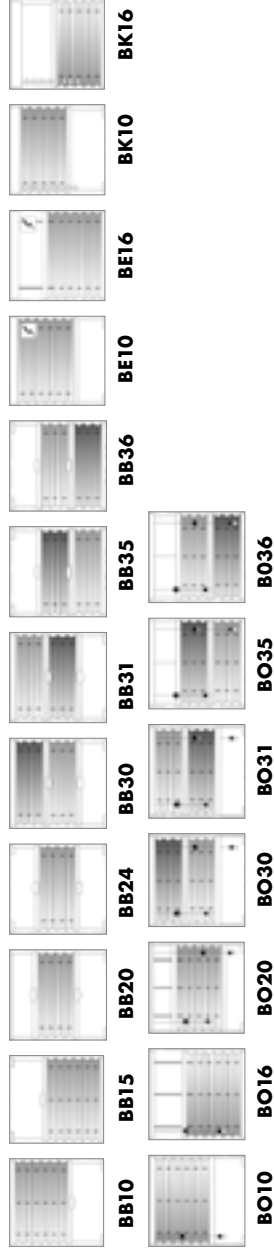
### MODELS A

Vertical drop models



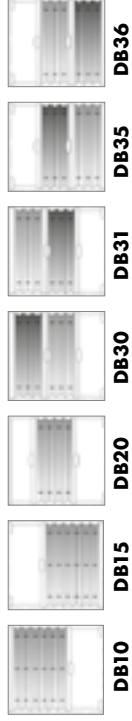
### MODELS B

Vertical drop models with lateral cord guide, maximum inclination 60° - 15°



### MODELS D

Skylight window models maximum inclination 60°



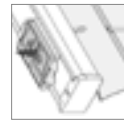
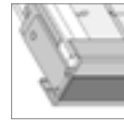
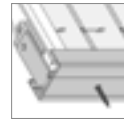
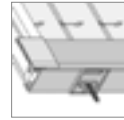
### MODELS P

Cable guide models for roof lights and horizontal windows

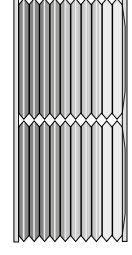
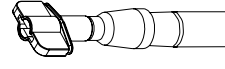


## 5 INSTALLATION TYPES

Indicate wall or ceiling installation on the order sheet.



## 6 OPTIONS





# Pleated & Cellular Blinds

ORDER Nr.

Date .....

## Bandalux USA

Fax: (305) 883-8441/orders@bandalux.com

Customer .....

Customer Nr. ....

INSTALLATION  YES  NO

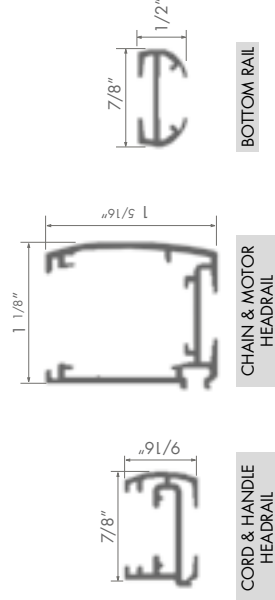
TYPE OF MOUNT	AREA	1 MEASURING		2 SIDE OF CONTROLS		3 FABRIC			4 ADDITIONAL FABRIC (FOR TWO BINDS SYSTEM OR NIGHT & DAY MODELS)			5 INSTALLATION		6 OPTIONS		
		QUANTITY	WIDTH ◀W▶	HEIGHT ↑	HEIGHT OF CONTROLS ↑ h <sub>c</sub>	LEFT	RIGHT	REFERENCE	COLLECTION	COLOR	REFERENCE	COLLECTION	COLOR		WALL	CEILING
IB 1/4"																
A																
B																
C																
D																
E																
F																

### HEIGHT OF STACK

HEIGHT OF BLIND	CORD		HANDLE		CHAIN		MOTOR	
	13/16" FABRICS	1" FABRICS	13/16" FABRICS	1" FABRICS	13/16" FABRICS	1" FABRICS	13/16" FABRICS	1" FABRICS
39"	2"	2 1/2"	1 5/8"	2 1/8"	2 5/8"	3 1/8"	2 5/8"	3 1/8"
78"	2 5/8"	3 1/2"	2 1/4"	3 1/8"	3 1/4"	4 1/8"	3 1/4"	4 1/8"
118"	3 1/8"	4 1/2"	2 3/4"	4"	3 3/4"	5 1/8"	3 3/4"	5 1/8"
157"	-	-	3 1/4"	5"	42 1/4"	6"	4 1/4"	6"

The person signing below is acknowledges to the general Bandalux Sales Conditions.

Stamp and sign



Note: in case the customer provides a blind manufacturing drawing, Bandalux will understand it to refer to the inside of the building. If otherwise, please indicate on the same drawing. Use the attached form to include drawings, available in this same chapter. All blinds will be supplied with the Basic installation supports at no extra cost.